



**Utilize SAS  
to support  
Course scheduling  
and  
faculty pay data**

**Daniel Le  
(Executive Managing Director)**

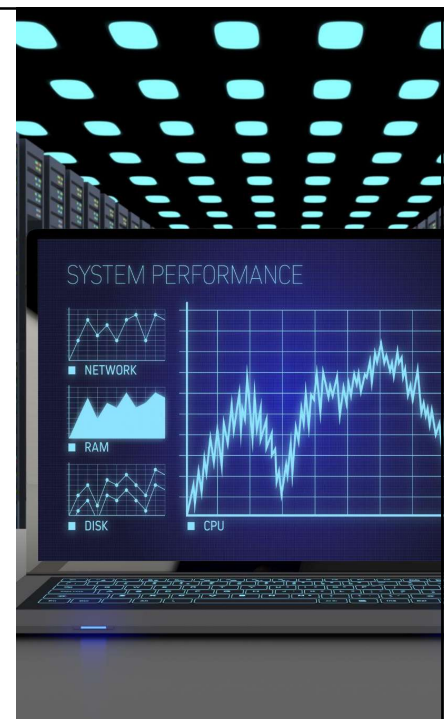
**DALLAS  
COLLEGE**

1

# DANIEL LE

## Agenda Items


- Introduction
- Why SAS Programming?
- Case Studies and Success Stories
- Discussion and Conclusion



2

**PART I:**


**INTRODUCTION**



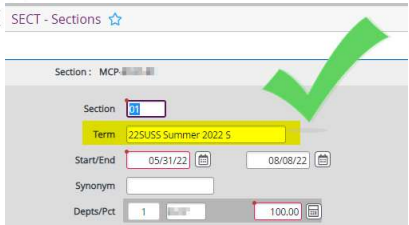
3

# DANIELLE

**Colleague (current ERP = Enterprise resource planning)**



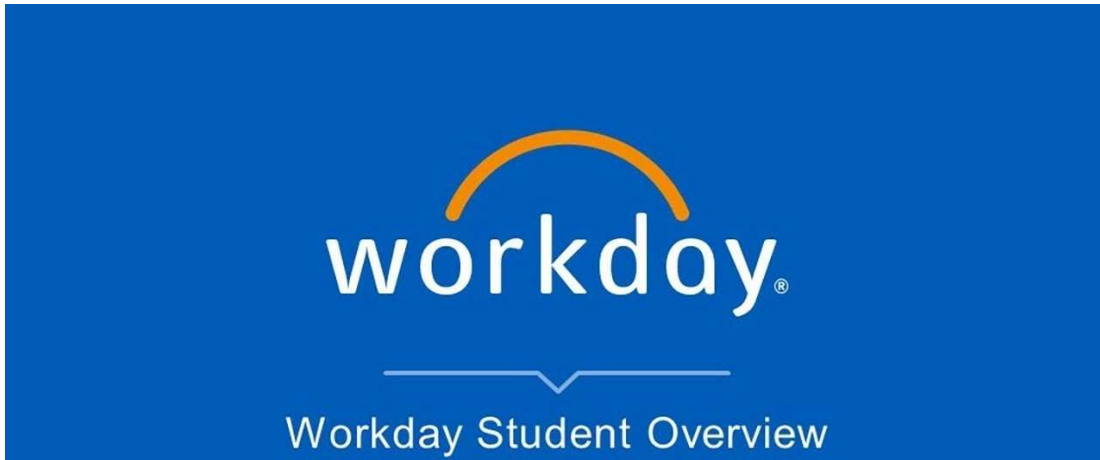
COLLEAGUE UI TRANSFORMATION powered by Ellucian XE



4



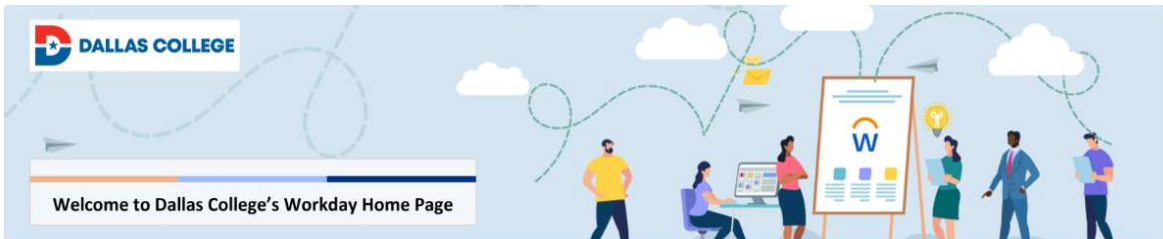
# Workday (new ERP)



5

5

# DANIEL LE



Welcome to Dallas College's Workday Home Page

## Introduction | Workday at Dallas College

Workday, an Enterprise Resource Planning (ERP) system, has replaced and will replace a number of dated legacy systems across Dallas College. Through standardizing business processes, enhancing collaboration across siloes, and empowering strategic, data-driven decision making, Workday is being implemented towards the goal of a unified system for Dallas College.

Visit the [Meet Our Team](#) page to learn more about the great folks who are working towards Dallas College's Phase 2, Workday Student implementation!

[Workday HR and Payroll and Workday Finance | Phase 1](#)

02/06/2023

Dallas College has already completed implementation of the project's Phase 1, Workday HCM & Payroll and Workday Financials, with the exception of a few outstanding modules.

[Workday Student | Phase 2](#)

Fall 2025

Currently, this team is executing Phase 2, Workday Student! One of the goals of Phase 2 of Dallas College's Workday implementation is to enhance the Dallas College credit student experience for users across campuses.

6

6

## What is an issue?



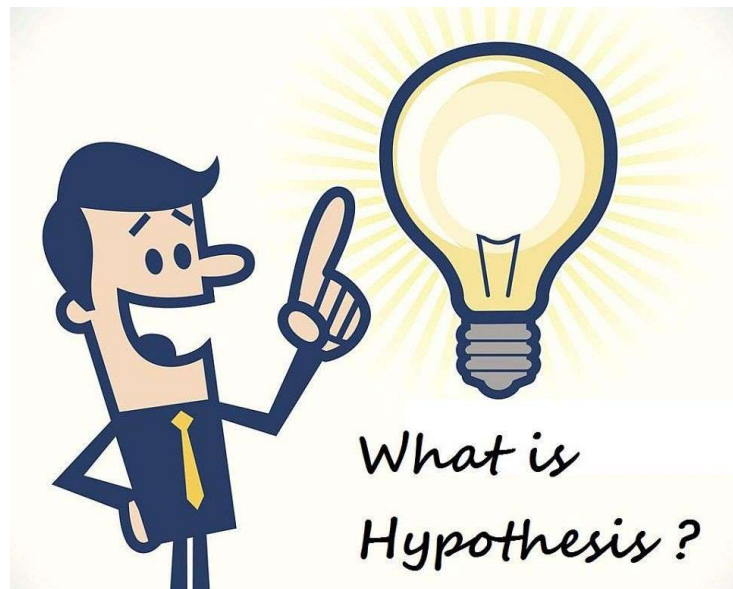
- After Workday went live on 02/06/2023, the HR and finance data were stored in Workday (new ERP = Enterprise resource planning), but course section level data was still in Colleague (current ERP).
- To process Adjunct faculty payment (based on their teaching assignments), we need to join the faculty data (HR site, Workday) and their assigned course sections (Colleague).
- In 2023, there was NO automatic integration to connect the data from both ERPs (We currently have the integration to streamline this process now).
- The compensation team (HR) needs to process these items manually.

7

7

# DANIEL LE

- The team of Workday transition consultants recommended the solution to solve this issue was EIB.
- The Enterprise Interface Builder (EIB) allows users to perform simple and secure integrations with Workday.
- To create EIB, we decided to use SAS programming.



8

8



## Part II: Why SAS programming?

9

# DANIEL LE

## Overview of SAS Software

- **Advanced Analytics**

SAS software is designed to perform advanced analytics, enabling organizations to gain valuable insights from their data.

- **Business Intelligence**

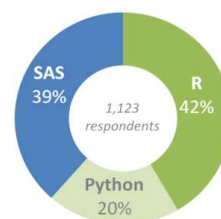
SAS provides robust business intelligence tools that help organizations make informed decisions based on data analysis.

- **Data Management Capabilities**

The software offers comprehensive data management features, ensuring data accuracy and consistency for analysis.

Industries where the tool is used

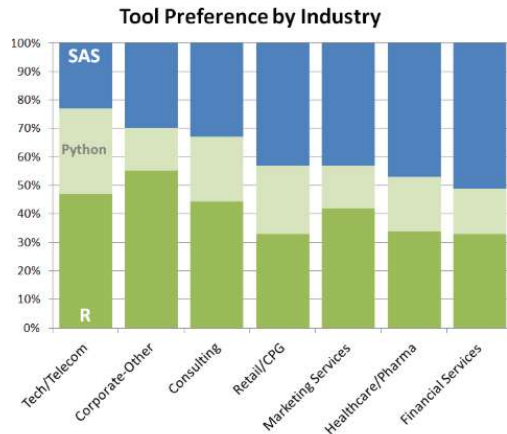
Burch Works, HR firm, asked over 1000 quantitative professionals which language they preferred, SAS, R or Python. Here are the survey results:



10



## Preference by Industry



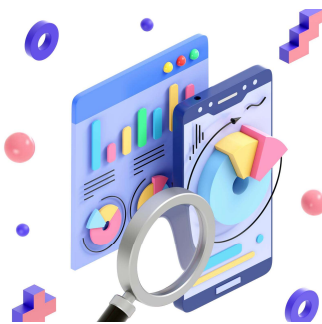
- SAS is largely preferred by big corporations because they are offered highly reputed customer service, which is also why SAS has an advantage in the financial services sector and marketing companies, where cost is not the primary concern for selecting a tool.
- Federal Government (FDA) also uses SAS.

11

11

# DANIEL LE

## Key Features and Capabilities



- **Data Access**

SAS provides robust data access features, allowing users to connect to various data sources easily.

- **Data Preparation**

With advanced data preparation capabilities, SAS enables users to clean, transform, and organize data efficiently.

- **Statistical Analysis**

SAS offers a wide range of statistical analysis tools, making it suitable for in-depth data examination and insights.

- **Reporting Capabilities**

The reporting features of SAS allow users to create comprehensive reports that summarize findings effectively.

12

## Benefits of Using SAS in Data Management

- **Improved Data Accuracy**

SAS enhances the accuracy of data, reducing errors and ensuring reliable information for analysis.

- **Efficient Data Processing**

Utilizing SAS streamlines data processing, allowing for quicker insights and operational efficiency.

- **Enhanced Decision-Making**

With SAS, institutions can make informed decisions based on thorough data analysis, driving strategic initiatives.



13

# DANIEL LE

## Part III: Case Studies and Success Stories



14

14



# EIB

	A	B	C	D	E	F	G
1	<b>Create Position</b>						
2	<b>Area</b>	All			<b>Position Data (All)</b>		
3	<b>Restrictions</b>	Required	Required	Optional	Optional	Optional	Optional
4	<b>Format</b>	Text	Organization_Reference	General_Event_Subcate	Text	Text	Text
5	<b>Fields</b>	Spreadsheet	Supervisory Organiza	Position Request Rea	Position ID	Job Posting Title	Job Description S
6		1					
7		2					
8							
9							

15

15

# DANIEL LE


I just need  
the main ideas



## Part IV: Discussion and Conclusion

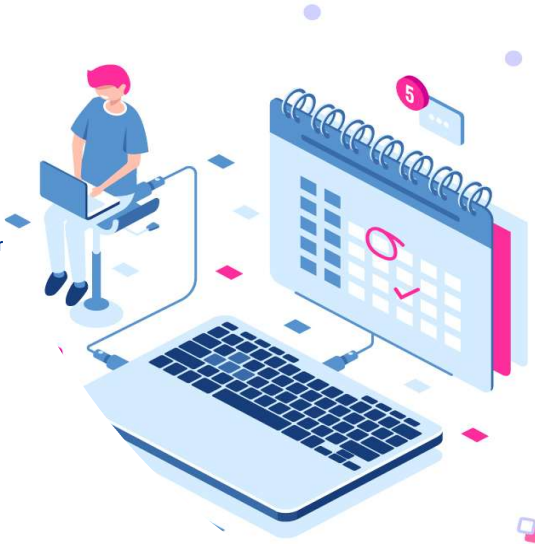
16





## Discussion


- Thanks to SAS integration, we reduced 50% of the Adjunct Faculty Pay processing time. It took one business day for Academic Scheduling department to generate the faculty pay data in EIB format file and check for any potential issues before sending it to Compensation department for the next processing step.
- We are currently exploring SAS to generate more different EIBs to support course sections scheduling.



17

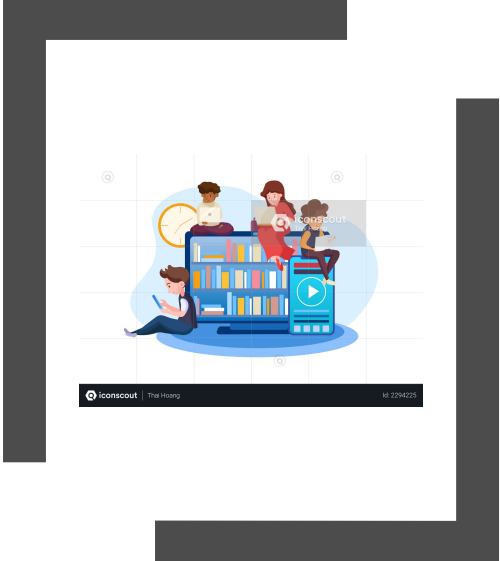
17

# DANIELLE



## Conclusion

- Change is never easy but necessary. When we face challenges, we seek for better solutions, for innovative approaches to overcome them.
- Every implementation offers valuable insights that can enhance future projects and optimize outcomes.
- The importance of professional development.
- In the era of A.I and machine learning, it is crucial to improve our data literacy as well as applying advanced analytical tools and programming in higher education.



18


18


## Contact Info


---

- Feel free to send your question/suggestion/discussion to:

Daniel Le  
dle@DallasCollege.edu








19

# DANIEL LE

## THANK YOU FOR LISTENING!



20

Scan the QR code to complete the session survey.



Texas Association for Institutional Research  
Annual Conference: February 25-28, 2025  
Omni Hotel in Corpus Christi, TX



21

# DANIELLE