

# The Power is in Their Hands: Facilitating Data Usage Throughout the University

Presented by: Dr. Susan Moreno, Carmen Allen and Vyas Krishnamurthy  
University of Houston, Office of Institutional Research

Texas Association for Institutional Research (TAIR)  
Houston, Texas  
February 28, 2017

Welcome to the Powerhouse.

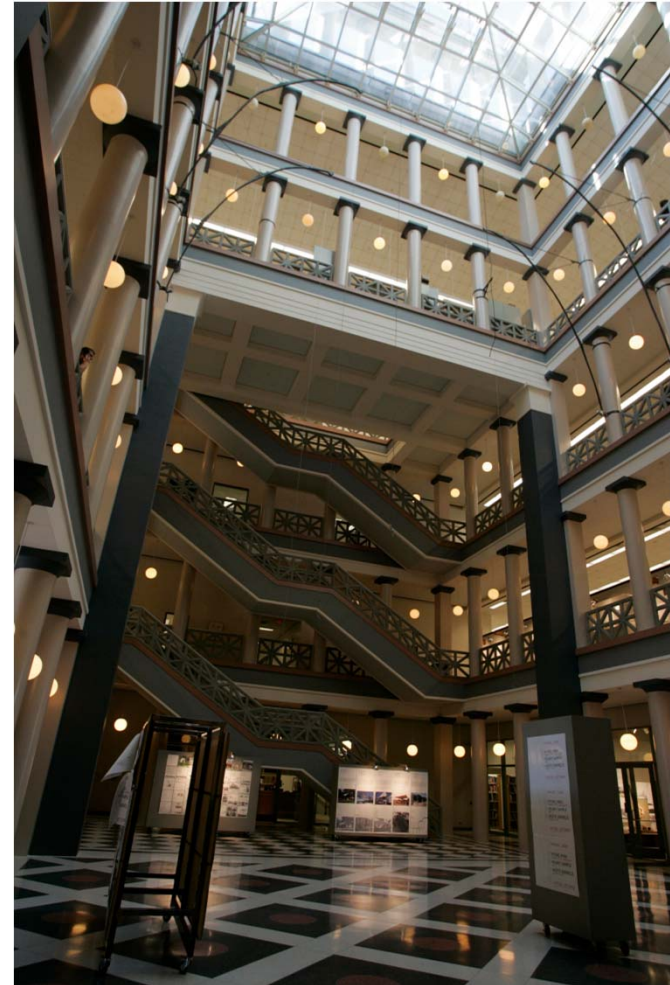
UNIVERSITY of **HOUSTON**

# Outline

- Introductions
- What are Reporting Tables?
- Reporting Tables Schema
- Description of Tables
- Query Training Overview
- Demonstration

# University of Houston

- 43,774 students
- 14 colleges
- 110 bachelors, 119 masters, 47 doctoral, and 3 professional programs
- 9,596 degrees awarded annually



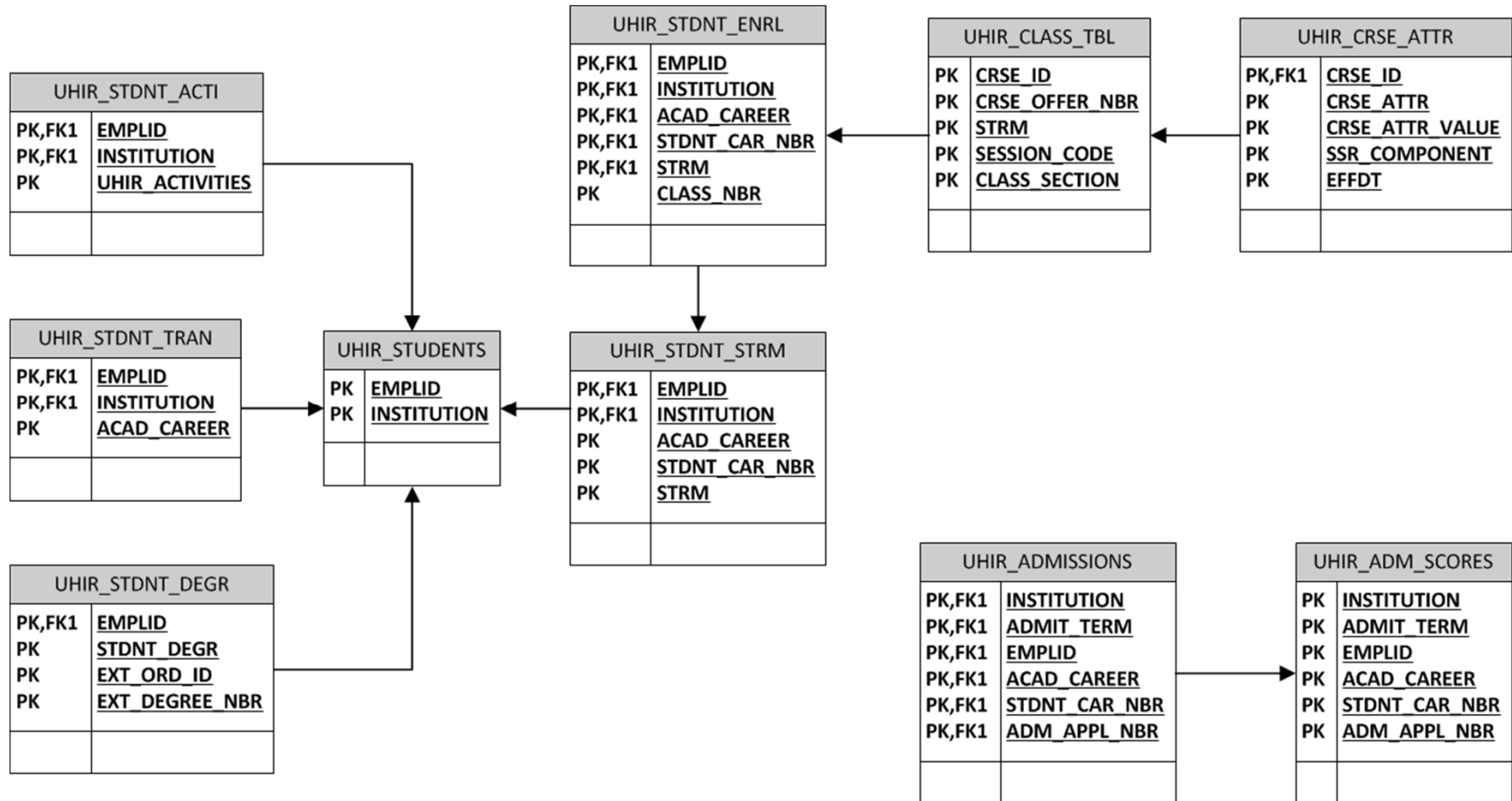
# The Need for Reporting Tables

- Data access before PeopleSoft...
  - Data dump
  - No query ability
  - Little flexibility in terms of fields included
- Data access after PeopleSoft...
  - Opportunity to change how we make data available
  - Consolidate data from many tables into about a dozen tables
  - Facilitate development of queries

# Reporting Table Logistics

- Refreshed daily overnight
- Roughly three hours to load
- Table purged and reloaded for the term being processed
- Key fields aid in query building

# Reporting Tables Schema



# Tables & Descriptions

Table Name	Description
UHIR_STUDENTS	Current demographic information for students. One record per student, per institution.
UHIR_STDNT_STRM	Term-specific information for students that have been enrolled in at least one class for that term.
UHIR_STDNT_ENRL	Class enrollment data by term.
UHIR_STDNT_DEGR	Degree information.
UHIR_STDNT_TRAN	Transfer information.
UHIR_STDNT_ACTI	Combination of student attributes, extra-curricular, student activity and student group data.
UHIR_CLASS_TBL	Data related to classes offered.
UHIR_ADMISSIONS	Admission application data.
UHIR_ADM_SCORES	Admission test score information.

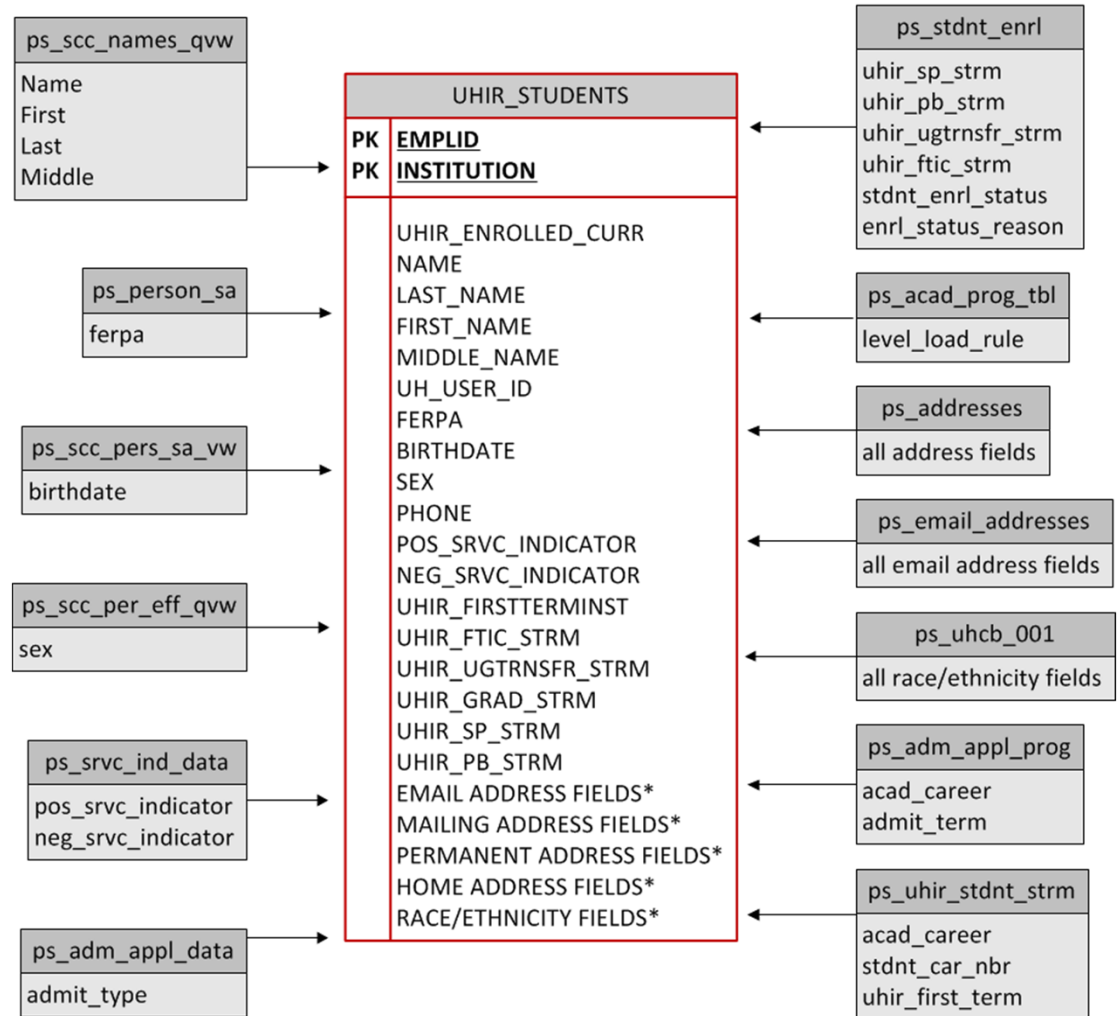
## Tables & Descriptions (cont'd)

Table Name	Description
UHS_STDNT_LOC	Identifies the locations of all of the classes in which a student is enrolled.
UHM_ADM_FTICPOP	Key information about admitted FTICs and where they are in the onboarding process.
UHM_FTIC_COHDAT	Tracks members of FTIC cohorts as they progress through the university.
UHM_UGRD_COHORT	Identifies new undergraduate students each semester; includes FTIC/transfer and degree-seeking status.
UHIR_HOUSING	Student data from the housing system from application to booking.



# Source Tables for UHIR\_STUDENTS

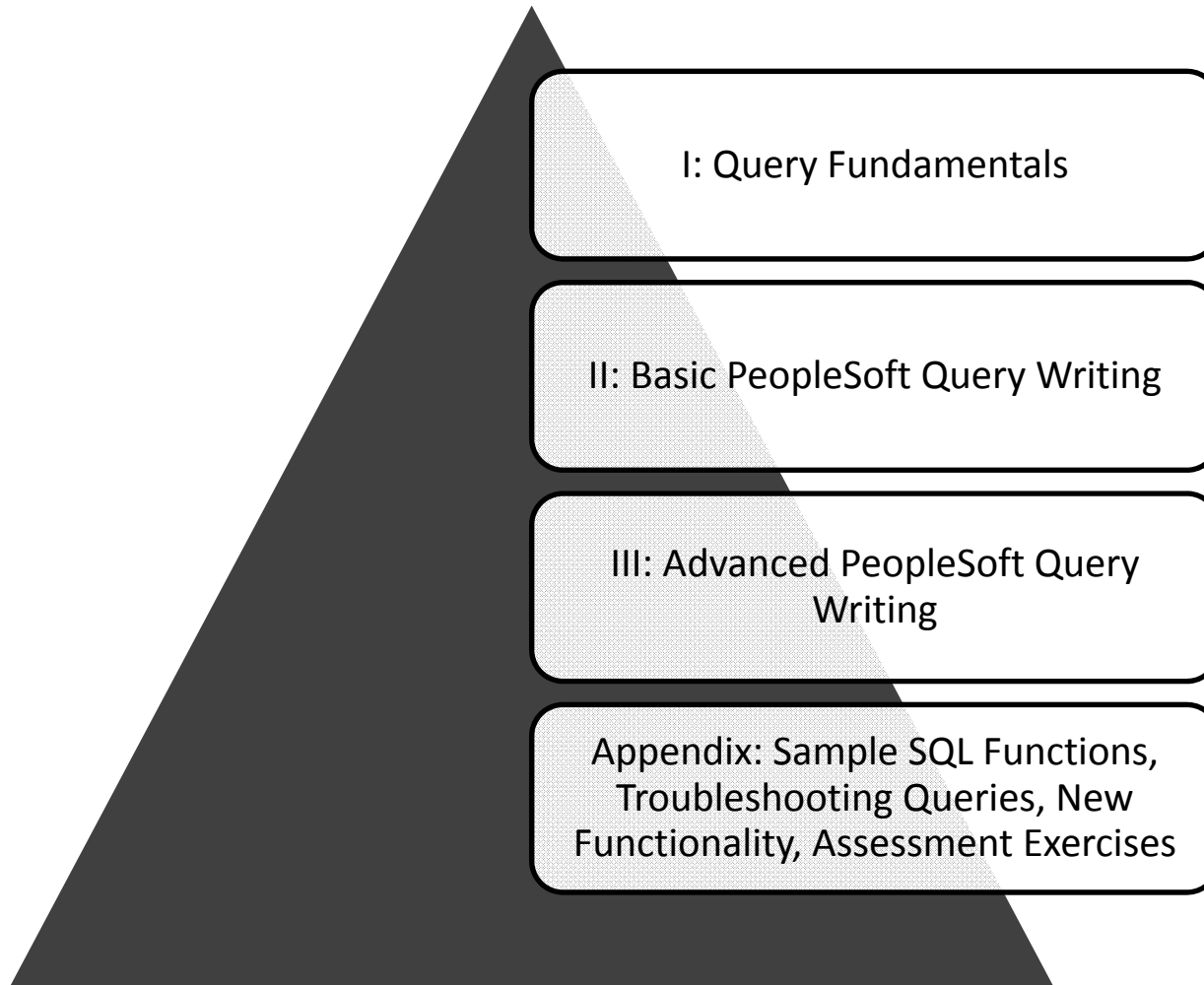
- 13 source tables
- 61 fields
  - 55 fields pulled
  - 6 derived fields



# Query Training

- Class Length
  - Fifteen hours
  - 5 consecutive days, 3 hours per day
- Participants
  - Users wanting access to be able to write queries in the PeopleSoft student module
- Frequency
  - 3 times a year (spring, summer, fall)
- Uses Training Database
- Partner with IT

# Query Training Outline



# Query Training Topics

- Overview of Tables
  - UHIR Reporting Tables
  - Coordinating Board (CB) Report Tables
- Query Writing
  - Effective Date Logic
  - Query Methodology
  - Joins/Functions/Expressions
- Assessment Exercises

# Query Training Assessment

- Background
  - Goal: grant access to query production data
  - Needed to ensure that users understood how to accurately query data
- Format
  - 2 exercises; 1 beginner, 1 advanced
- Grading
  - Correct tables/fields
  - Joins
  - Output formatting
  - Expressions, functions, aggregation, etc.

## Example Assessment Exercise

Provide a list that displays the EMPLID and CUM\_GPA for all students enrolled at the end of the term during Fall 2009 at UH if the student had a cumulative GPA of at least 3.0. If the student belonged to the Honors (R003) activity type, provide that additional information in a column (UHIR\_ACTIVITY\_TYPE). Also add a calculated column that combines the student's current Academic Standing code with their primary plan (with a dash in between), i.e. 'E-TELSBS'; the title of the column should be "Standing and Plan". The institution should be a run-time variable that defaults to value '00730', having a lookup against master table 'INSTITUTION\_TBL' and having custom heading text that says "Enter the institution". Sort the data by activity type, then by student ID.

Tip: You should receive 18,144 rows of data.

# Query Tool Demonstration



# Thank you!!

Dr. Susan Moreno

[semoreno@uh.edu](mailto:semoreno@uh.edu)

Carmen Allen

[ceallen74@uh.edu](mailto:ceallen74@uh.edu)

Vyas Krishnamurthy

[vkrishnamurthy@uh.edu](mailto:vkrishnamurthy@uh.edu)

UNIVERSITY of **HOUSTON** | INSTITUTIONAL RESEARCH