

Developmental Education Accountability Measures: The Logic Behind the Scenes

Julie Eklund, Texas Higher Education Coordinating Board
Jana Cossairt, Texas Higher Education Coordinating Board

Developmental Education Accountability Measures

- Also called TSI (Texas Success Initiative) measures
- Designed to provide information about students who are not college ready when they first enter an institution of higher education
- Include data for college-ready counterparts for comparison purposes
- Require following students longitudinally for three years

The Three Measures

- ① The percent of underprepared and prepared students who successfully complete a college-level course in math, reading and writing. Prepared students are given 1 year. Underprepared students are given 3 years.
- ② The percent of underprepared students who satisfied TSI obligation within 2 years.
- ③ The percent of underprepared and prepared students who return the following fall.

Accountability System and Dev Ed Data Reports

Home | THECB Main Website

ABOUT OUR DATA | ABOUT THECB | CONTACT US

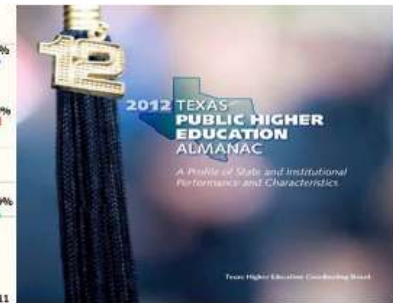
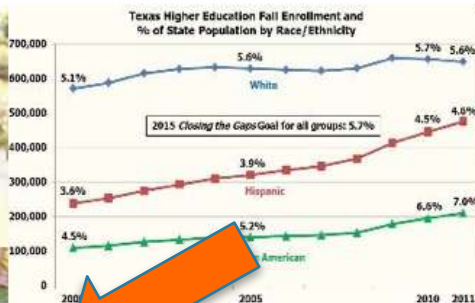
T * E * X * A * S HIGHER EDUCATION DATA

Search GO

Overview (Quick Links) | External Data Resources | Online Applications | Higher Education Topics | High School to College (P-16) | Reporting to THECB | A-Z

Index

- Polymakers**
Accountability, almanac, financials...
- Parents, Students & K-12 Educators**
Online Resume, H.S. to college stats...
- Media**
Overview, Almanac, Press Releases...
- Institutions and Researchers**
Reporting data, statistics...
- Career and Workforce Educators**
Perkins, WECM, Workforce Topics...



Overview (Quick Links)	Online Applications	Higher Education Topics	High School to College (P-16)
Closing the Gaps Closing the Gaps Dashboard Data Resources Overview Degrees - Statewide Enrollment - Statewide Higher Ed Almanac Higher Ed Locator Map (HELM) List of Institutions Media Advisories Reports and Publications Texas Higher Ed Facts More...	Accountability Community College Annual Reporting Tool (CARAT) Course and Program Inventories Facilities Inventory Online Institutional Resumes Profile Reports (PREP) Regional Portal More...	>>>Participation Applicants/Acceptance/Enrollment Developmental Ed Data (TSI) Developmental Ed Survey (DES) Distance Ed Data Enrollment Forecast Student Migration Report Texas Higher Ed Enrollments More... >>>Success Annual Licensure Report Gainful Employment - Placement Rate Graduation Rates Student Follow-up Transfer Students' Success More...	7th Grade Cohorts 7th Grade Cohorts Dashboard Dual Credit Data HS Grads Enrolled in Higher Ed HS Grads GPA in Higher Ed Higher Ed Outcomes Higher Ed Preparation (TSI) Tracking Postsecondary Outcomes Dashboard More... Reporting to THECB CBM Reporting Status CBM Reporting Manuals CIP Codes Using SFTP to Transfer Files More...
External Data Resources	College for all Texans Generation Texas (GenTX) Texas Public Education Information		

- ### Latest News
- 02/06/2013 [Data Resources for LBB Measures](#)
 - 02/04/2013 [Online Institutional Resumes: 2013 Update](#)
 - 01/25/2013 [Enrollment Forecast 2013-2020 for Texas Colleges and Universities](#)
 - 01/25/2013 [Texas Higher Education Accountability System Update](#)
 - 01/11/2013 [2012 Sources and Uses Report and new data workbooks](#)

Accountability System and Dev Ed Data Reports

- Accountability System
 - Shows most recent year for which three years of data exists
 - Current system shows data for Fall 2008 cohort
- Dev Ed (TSI) Data (web reports)
 - First published when students have been tracked for one year and then updated for year two and year three
 - Provide “in progress” view of data
 - Currently we have Fall 2010 cohort tracked for 1 year, Fall 2009 cohort tracked for 2 years, and Fall 2008 cohort tracked for 3 years
 - Reports back to 2003
- The CBM002 report changed in 2009
 - 2009 data and forward should not be directly compared to data for earlier years

The Logic Behind...

- Identifying the cohort
- Determining the initial TSI status of cohort
- Calculating the three measures

Note that institutions will not always be able to replicate TSI data produced by the CB because we look across institutions.

Identifying the Cohort

- First-time in college (FTIC) students
 - Record in CBM001
 - Transfer/First-time in College
 - Coded '000001' → first-time in college
 - Intent field
 - Coded '1', '2', '3', '6', or '7' → associates, certificate,, transfer, did not respond, BAT
- Both part-time and full-time students included

If students are not correctly reported as FTIC when they initially enroll, they will not be included in the fall cohort

Identifying Initial TSI Status

- Initial TSI status for each student in the fall FTIC cohort is determined using the CBM002
- Look across institutions to determine if TSI is satisfied
- Criteria for TSI satisfied at initial enrollment
 - Blanket exemption – TSI satisfied for all TSI areas
 - Item #10 reported as '5' or '6' → earned degree or previous TASP exemptions
 - (TSI Satisfied by Census Date should be reported as '1' or '2' for #20/40/60 and '2' for #24/44/64)
 - Satisfied for individual subject area
 - No waiver or blanket exemption (item #10 reported '0')
 - TSI area satisfied by census date (item #20/40/60 reported '1' or '2' – yes, at my institution or yes, at another Texas public institution)
 - TSI area satisfied by end of term (item #24/44/64 reported as '2' – already satisfied by census date)

Identifying Initial TSI Status

Waiver or Military Exemption Reported

- Criteria for TSI satisfied for individual subject area w/waiver ONLY IF...
 - Waiver for level-one certificate, non-degree seeking, or military exemption (item #10 reported '1', '3', or '4')
 - AND
 - Exemption for TSI area (item #21A/41A/61A reported '2', '3', '4', or '5')
 - OR
 - Successful on TSI Assessment Test (items #22/42/62 with approved test and score that meets TSI standard)
- Waivers and Military Exemptions reported as 'Unknown' for subject area if evidence of TSI satisfaction not provided (TSI does not apply)

Measure 1: First College Course

- Time frame
 - One year for prepared students
 - Three years for underprepared students
- Once a student is reported as having credit for a first college-level course, the status is fixed
- Look across institutions to determine credit for first college course
- CBM002
 - Credit for first college-level course (item #30/50/70 reported '1', '2', '3', or '4')
- CBM00S
 - First College-Level Course (item #20 for Univ or #23 for CTC reported as '1', '2', '3', or '4' – credit for math, reading, writing, or reading/writing)

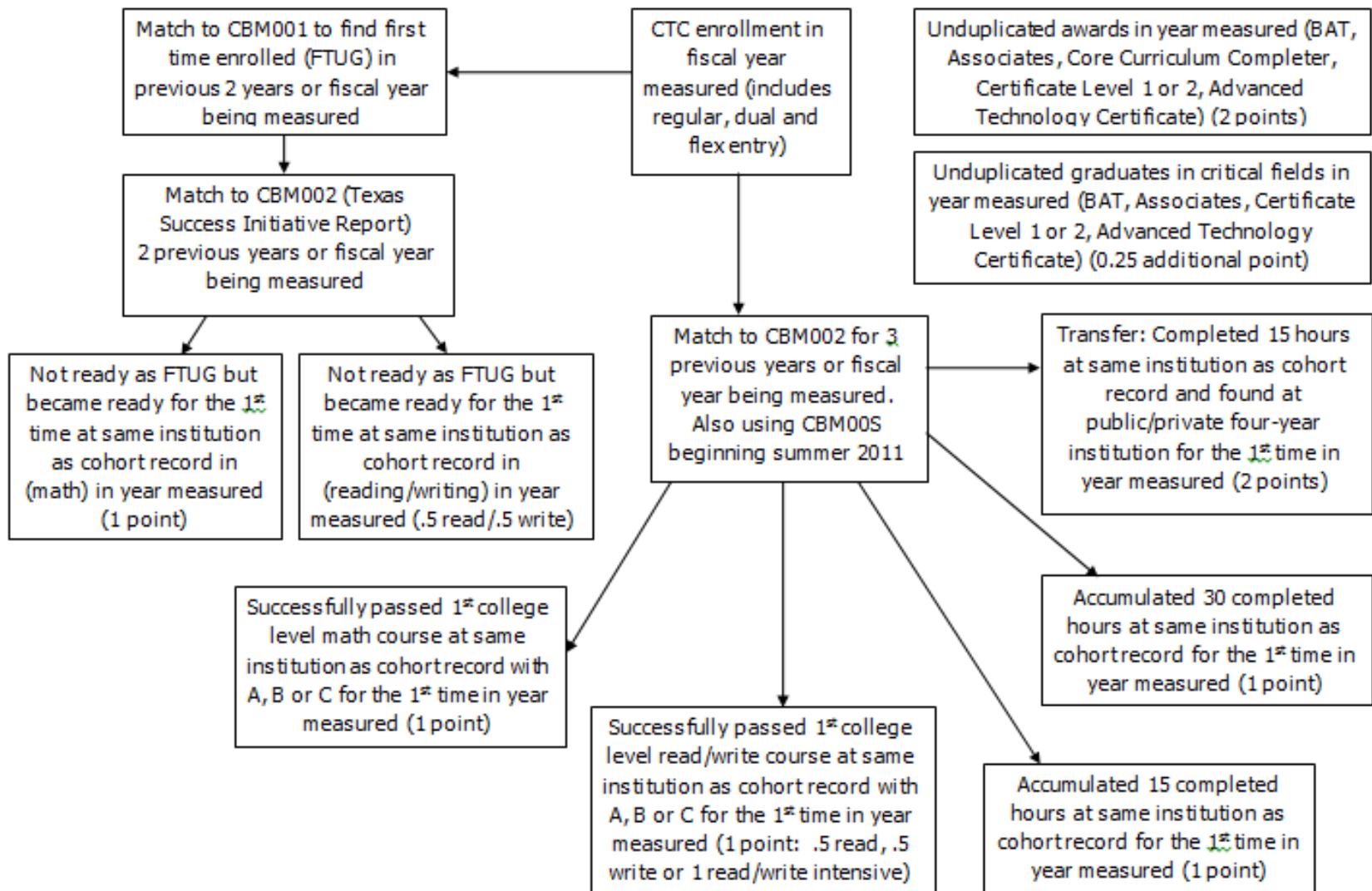
Measure 2: Met TSI Obligations

- Time frame
 - Two years for underprepared students
- Once a student is reported as having met TSI obligations for a subject area, the status is fixed
- Look across institutions to determine if TSI obligation is met
- CBM002
 - Item #24/44/64 reported as '1' – met TSI obligation this semester

Measure 3: Return Following Fall

- Time frame
 - One year follow-up
- CBM001
 - Check if student is found enrolled at any Texas public institution during the following fall

Calculating Success Points



Calculating Success Points

- Dual credit students:
 - are not included when calculating success points for under-prepared students who meet TSI after initial enrollment (dual credit students have already met readiness standards AND TSI readiness is tracked from first-time undergraduate, FTUG/FTIC status).
 - are included when calculating other success points measures, as shown in flow chart on preceding slide (including points for first college-level course completion).

Questions? Comments?

Contact Information:

Jana Cossairt, Program Director, THECB

Julie Eklund, Director of Planning, THECB

Email us at: first.last@thecb.state.tx.us