

Gabriela Borcoman  
THECB  
TAIR 2013

# Accountability System for Texas Non-Public Institutions:

A New Tool for  
Evaluation of Higher  
Education in Texas



# SB 1534: Accountability System for Degree-Offering Career Schools and Colleges

- Resemble the accountability system for public institutions
- Create institutional groupings, if appropriate
- Consult with affected career institutions
- Adopt rules, if necessary
- Report to legislature on affected entities that do not participate

# Institutions included

- ◉ Degree-awarding higher education institutions, other than public
- ◉ Independent institutions (ICUT) are not included
- ◉ They can be 2- or 4-year institutions
- ◉ They can be:
  - ◉ For-profit institutions: University of Phoenix
  - ◉ Non-profit institutions: Remington College
  - ◉ Religious-based institutions: Criswell College
  - ◉ Out-of-State public/private institutions: Tulane University, University of Arkansas

# Texas Higher Education Coordinating Board



[Board Members](#) | 
 [Commissioner](#) | 
 [Agency Info](#) | 
 [Index A-Z](#) | 
 Search:

- Closing the Gaps Higher Education Plan**
- Communications and Policy**
- Workforce, Academic Affairs and Research**
- Research and Project Grants**
- P-16 Initiatives**
- Finance and Resource Planning**

- Data Resources and Tools**
  - Online Institutional Resumes**
  - Applying and Paying for College**
  - Star Awards**
  - Laws and Rules**
  - Related Links**
- Data Resource Overview (PDF)**
  - Accountability System**
  - Online Institutional Resumes**
  - Texas Higher Education Data**
  - K-16 Data Resources (TPEIR)**

Texas Productivity Index Share More info

**PRODUCTIVITY INDEX: TEXAS AND THE NATION**

Higher Education Coordinating Board (THECB) launched [Closing the Gaps](#) to expand access, increase postsecondary completions, facilitate

Home | THECB Main Website

# T ★ E ★ X ★ A ★ S HIGHER EDUCATION DATA

Overview (Quick Links) | External Data Resources | Online Applications | Higher Education Topics | High School to College (F

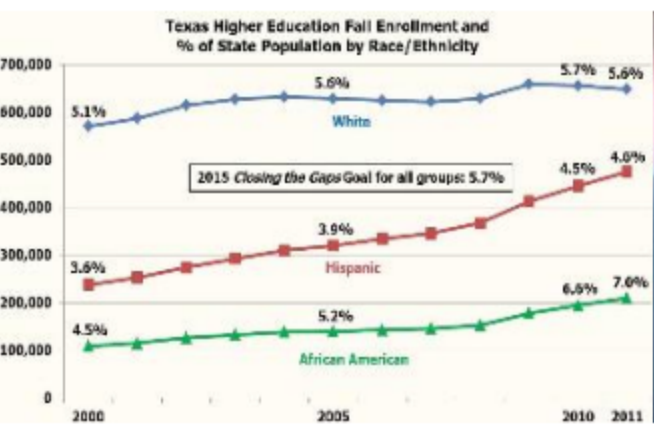
**Policymakers**  
Accountability, almanac, financials...

**Parents, Students & K-12 Educators**  
Online Resume, H.S. to college stats...

**Media**  
Overview, Almanac, Press Releases...

**Institutions and Researchers**  
Reporting data, statistics...

**Career and Workforce Educators**  
Perkins, WECM, Workforce Topics...

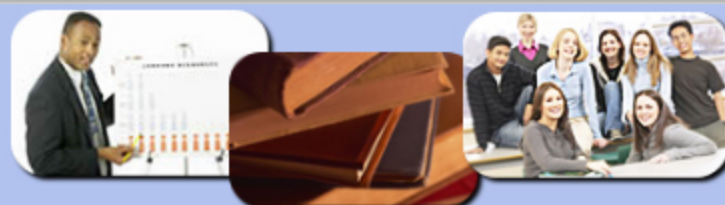


- Latest News**
- 10/08/2012 [2010-2011 ASALFS Students Pursuing Additional Education](#)
  - 10/05/2012 [2010-2011 Automated Student and Adult Learner Follow-Up System Results](#)
  - 09/06/2012 [2010-2011 Student Migration Report](#)

- Overview (Quick Links)**
- Closing the Gaps
  - Closing the Gaps Dashboard
  - Data Resources Overview
  - Degrees - Statewide
  - Enrollment - Statewide
  - Higher Ed Almanac
  - Higher Ed Locator Map (HELM)
  - List of Institutions
  - Media Advisories
  - Reports and Publications
  - Texas Higher Ed Facts

- Online Applications**
- [Accountability](#)
  - Community College Annual Reporting Tool (CARAT)
  - Course and Program Inventories
  - Facilities Inventory
  - Online Institutional Resumes
  - Profile Reports (PREP)
  - Regional Portal
  - More...

- Higher Education Topics**
- >>> Participation**
    - Applicants/Acceptance/Enrollment
    - Developmental Ed Data (TSI)
    - Developmental Ed Survey (DEPS)
    - Student Migration Report
    - Texas Higher Ed Enrollments
    - More...
  - >>> Success**
    - Annual Licensure Report
    - Gainful Employment - Placement Rate



## Higher Education Accountability System

[CB Home](#) [CB Data](#) [Accountability History](#) [Measures & Definitions](#) [Peer Groups & Reports](#) [Institutional Login](#) [Closing the Gaps](#) [SEARCH for Accounts](#)

### Texas Higher Education Accountability System

The Higher Education Accountability System is used to track performance on critical measures that exemplify higher education institutions' missions. The System is modeled on the state's higher education plan, [Closing the Gaps by 2015](#). Its major focus is on the four *Closing the Gaps* target areas of participation, success, excellence and research.

### Closing the Gaps

#### Participation

By 2015, close the gaps in participation rates across Texas to add 630,000 more students.

- [Universities](#) (Texas public)
- Two-Year Institutions (Texas public)
  - [Texas State Technical Colleges and Lamar State Colleges](#)
  - [Community Colleges](#)
- [Health-Related Institutions](#) (Texas public)
- [Four-Year Institutions](#) (not Texas public)
- [Two-Year Career Institutions](#) (not Texas public)
- Closing the Gaps Institutional Targets ([PDF](#)) ([XLS](#))

#### Success

By 2015, award 210,000 undergraduate degrees, certificates and other identifiable student successes from high quality programs.

- [Universities](#) (Texas public)

#### Interactive access to data

Use this tool to customize data by time periods, accountability measures, and to specify institutions. Use the drop-down and pick a year or all years. Then press

Type:

#### Research

By 2015, increase the level of federal science and engineering research at Texas institutions to 6.5 percent of obligations to

- [Universities](#) (Texas public)
- [Health-Related Institutions](#) (Texas public)
- Closing the Gaps Institutional Targets ([PDF](#)) ([XLS](#))
- [Intellectual Property Policies](#)

#### Institutional Efficiency and Effectiveness

- [Universities](#) (Texas public)
- [Health-Related Institutions](#) (Texas public)



# HB 736, Section 8: Online Resumes for Career Entities

- Purpose: improve and coordinate the dissemination of online information regarding the operation and performance of career schools or colleges that ...[are]...doing business in this state.
- Presentation: organize that information as nearly as possible according to the categories of information required for the online resumes of lower-division public institutions

# HB 736: Website Information

- to the extent practicable, consistent among the institutions, schools, and colleges; and
- easily accessible and readily understandable to the public.
- Each institution will have a link to the Online Resume



# Texas Higher Education Coordinating Board



[Board Members](#) | 
 [Commissioner](#) | 
 [Agency Info](#) | 
 [Index A-Z](#) | 
 Search:

- Closing the Gaps Higher Education Plan**
- Communications and Policy**
- Workforce, Academic Affairs and Research**
- Research and Project Grants**
- P-16 Initiatives**
- Finance and Resource Planning**

- Data Resources and Tools**
  - Online Institutional Resumes**
  - Applying and Paying for College**
  - Star Awards**
  - Laws and Rules**
  - Related Links**
- Data Resource Overview (PDF)**
  - Accountability System**
  - Online Institutional Resumes**
  - Texas Higher Education Data**
  - K-16 Data Resources (TPEIR)**

Texas Productivity Index Share More info

Higher Education Coordinating Board (THECB) launched *Closing the Gaps* to expand access, increase postsecondary completions, facilitate

# T ★ E ★ X ★ A ★ S HIGHER EDUCATION DATA

Overview (Quick Links) | External Data Resources | Online Applications | Higher Education Topics | High School to College (F

## Polymakers

Accountability, almanac, financials...

## Parents, Students & K-12 Educators

Online Resume, H.S. to college stats...

## Media

Overview, Almanac, Press Releases...

## Institutions and Researchers

Reporting data, statistics...

## Career and Workforce Educators

Perkins, WECM, Workforce Topics...

### Latest News

10/08/2012 [2010-2011 ASALFS  
Students Pursuing  
Additional Education](#)

10/05/2012 [2010-2011 Automated  
Student and Adult Learner  
Follow-Up System Results](#)

09/06/2012 [2010-2011 Student  
Migration Report](#)

## Online Institutional Resumes

**First**, select an institution type, institution and year.

### Institution Type:

Universities (TX Public)  
Two-year Institutions (TX Public)  
Health-Related Institutions (TX Public)  
Four-Year Institutions (not TX Public)  
Two-Year Institutions (not TX Public)

### Institution:

(Select School)

Year: 2011

**Next**, select the report type that fits your needs.

The link for Prospective Students, Parents and the Public gives data on institutional enrollments, success.

Report Type: Prospective Students, Parents and the Public

Generate



# Institutional Groups

## 2-year institutions

- There are three (3) groups, determined mainly by enrollment
- All institutions are approved to award up to associate degrees
- Groups:
  - Small institutions
    - enrollment between 1 and 499 students
    - 17 institutions
    - Examples: Franklin College (El Paso), KD Studio (Dallas), Dallas Institute of Funeral Service



# Institutional Groups

## 2-year institutions (cont.)

- Groups (cont.):
  - Medium institutions
    - enrollment between 500 and 999 students
    - 13 institutions
    - Examples: ITT Technical Institute (Webster), Kaplan College (Dallas), Texas School of Business (Houston), Western Technical College (El Paso)
  - Large
    - enrollment over 1,000 students
    - 36 institutions
    - Examples: ITT Technical Institute (Austin), Kaplan College (McAllen), Everest Institute (Houston), Remington College (Dallas)

# Institutional Groups

## 4-year institutions

- There are six (6) groups, determined mainly by the level and type of degree they are approved to award
- Groups:
  - Up to Bachelor's degrees
    - 18 institutions
    - Examples: Westwood College (Dallas), The Art Institute (Dallas), University of Illinois at Chicago
  - Bachelor's degrees and higher
    - 17 institutions
    - Examples: Argosy University (Dallas), University of Phoenix (Dallas), Northwood University , DeVry University



# Institutional Groups

## 4-year institutions (cont.)

- Groups (cont.):
  - Graduate degrees only
    - 5 institutions
    - Examples: University of Florida, Tulane University
  - Health-related institutions
    - 14 institutions
    - Examples: Chamberlain College of Nursing, The Academy of Oriental Medicine, Middle Tennessee School of Anesthesia

# Institutional Groups

## 4-year institutions (cont.)

- Groups (cont.):
  - Online only
    - 7 institutions
    - Examples: Capella University, Kaplan University
  - Religious institutions
    - 14 institutions
    - Examples: Oblate School of Theology (San Antonio), Reformed Theological Seminary (Houston)



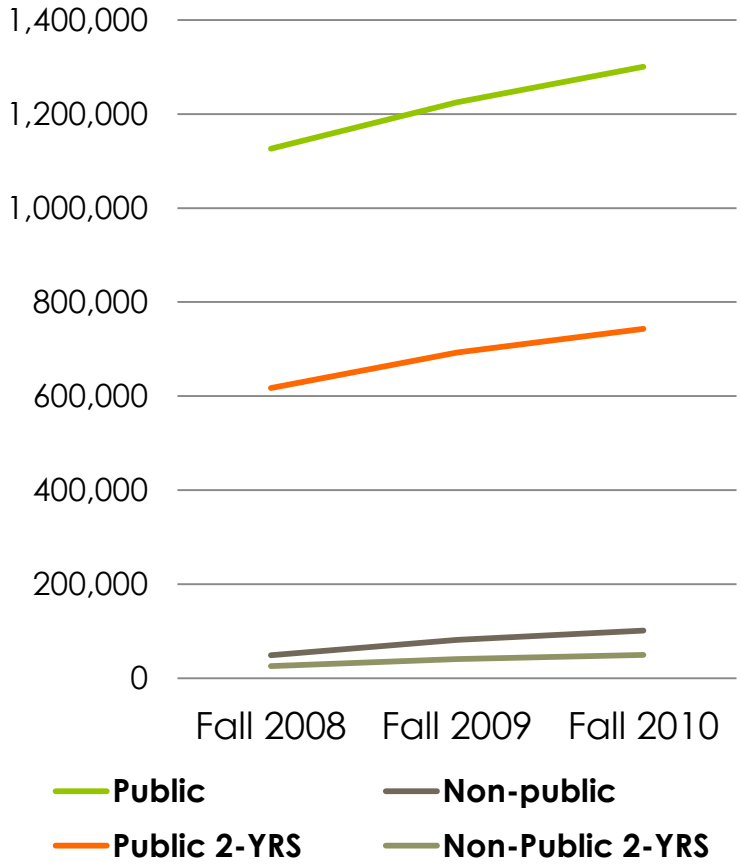
# Texas Accountability System

- The only accountability system that includes every type of institution in higher education
- Allows valid evaluation of the state of higher education in Texas, regional and statewide
- Allows valid comparisons between institutions and groups

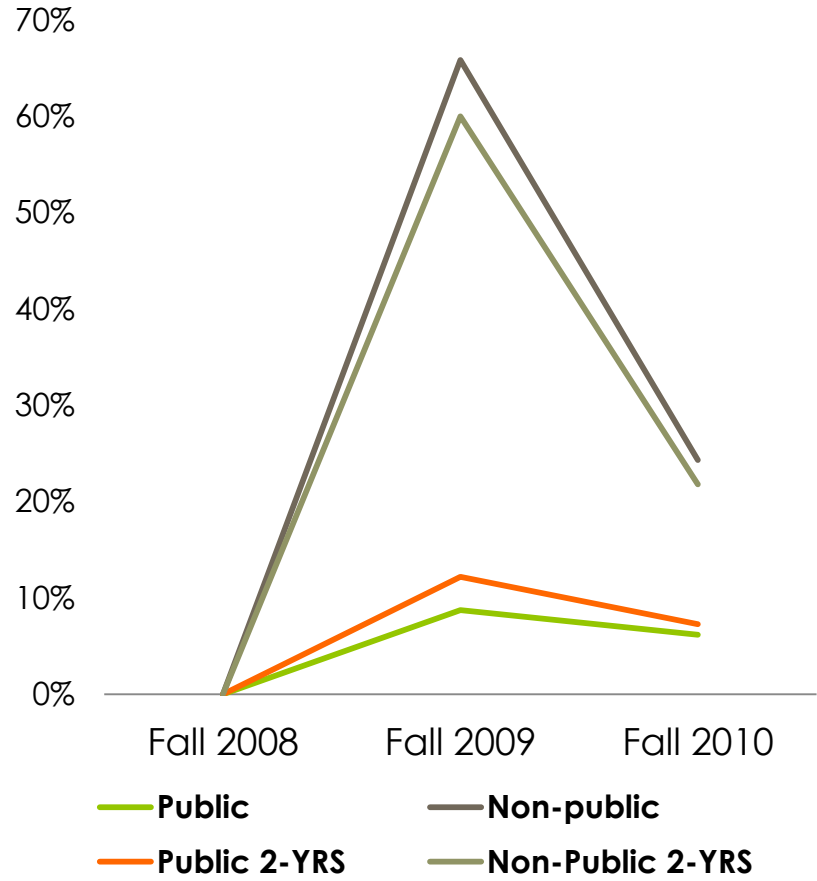


# Participation: Fall Enrollment

## Headcount

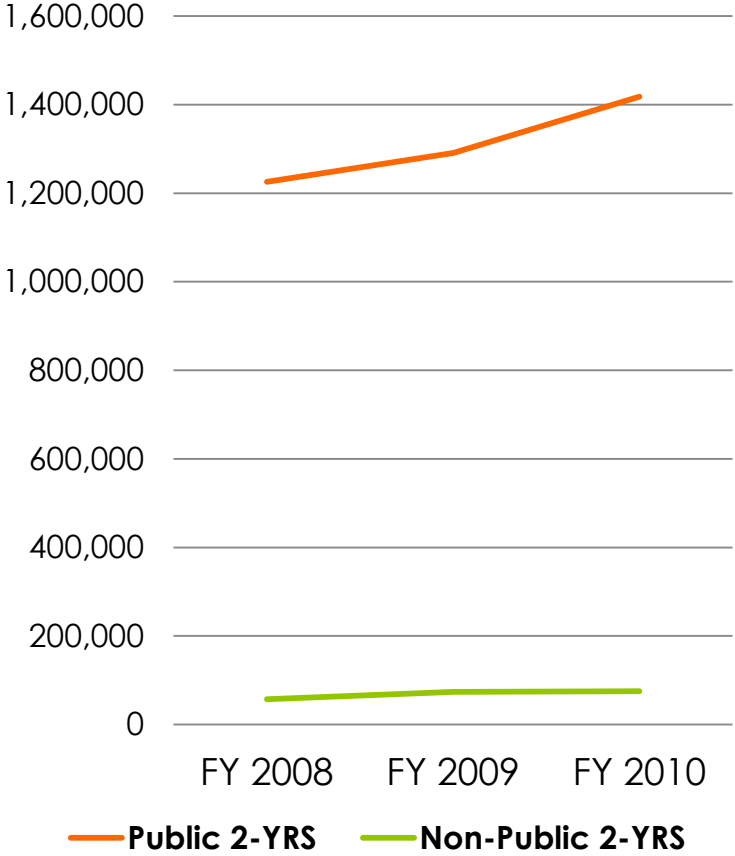


## Increase in Enrollment

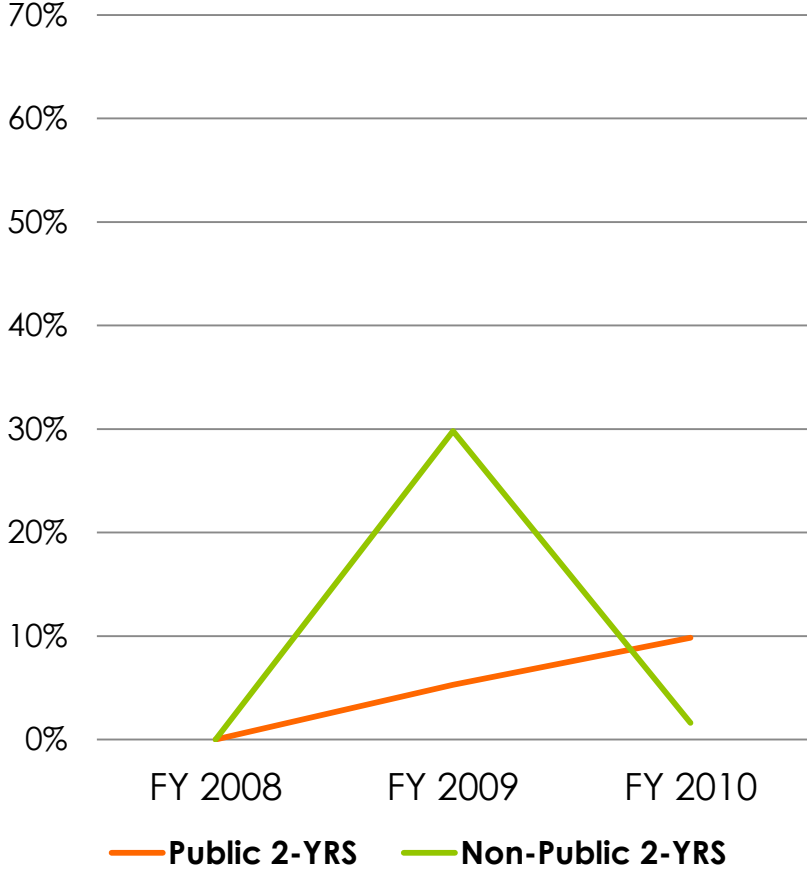


# Participation: Annual Enrollment

### Headcount

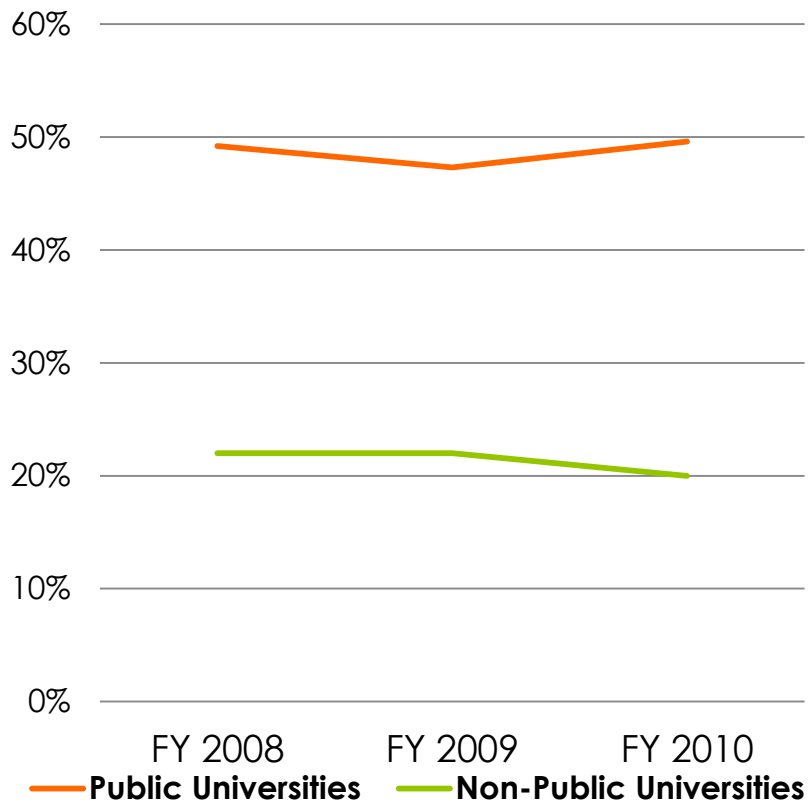


### Increase in Enrollment

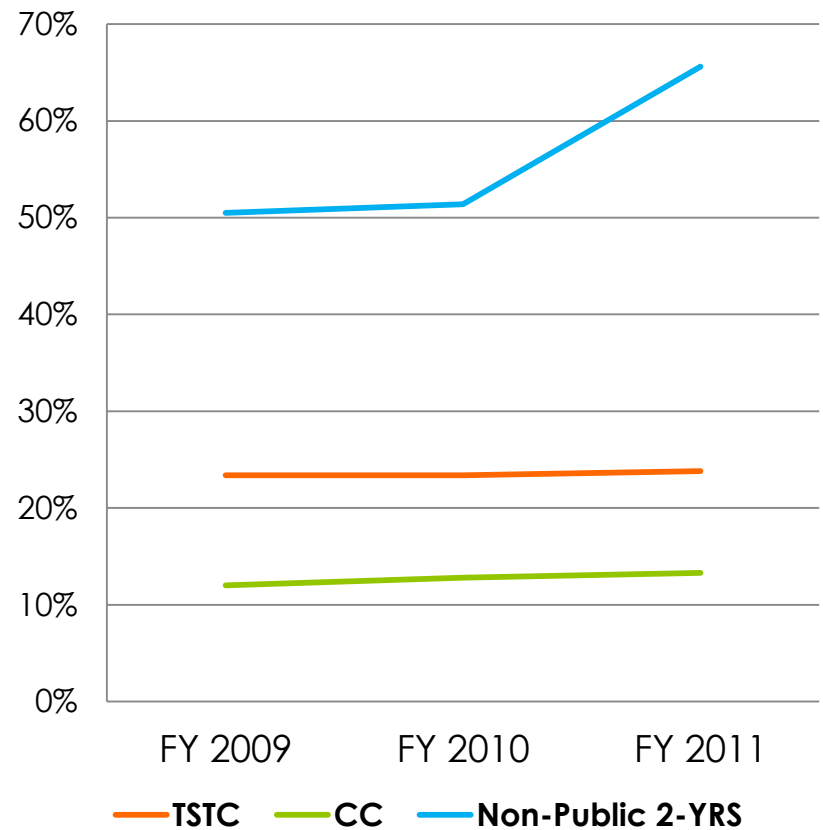


# Success: Graduation Rate

## Six-year Graduation Rate Universities

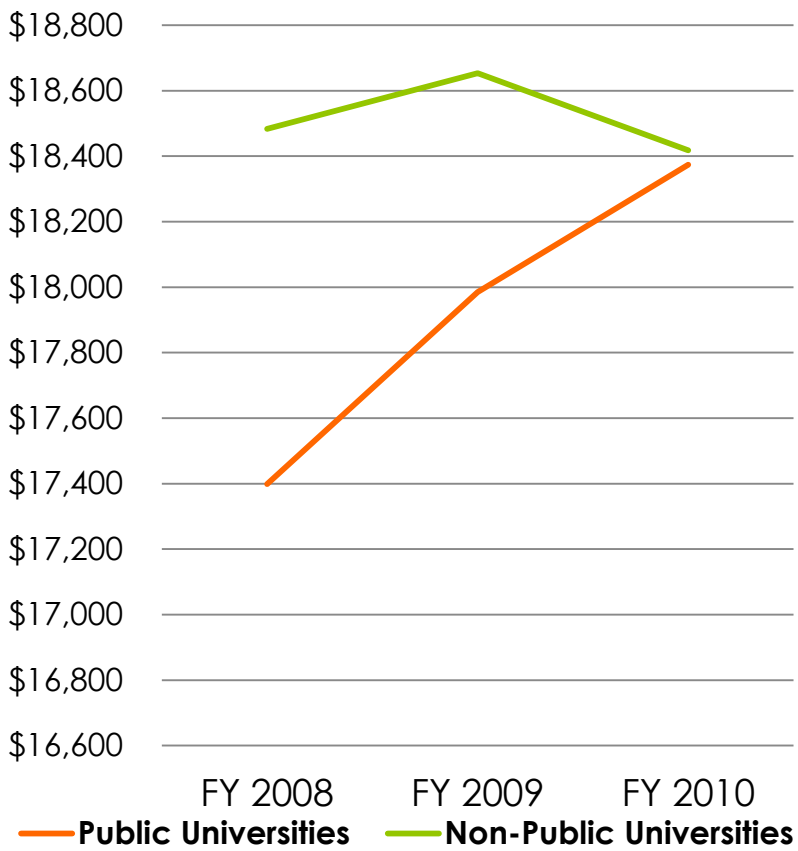


## Three-year Graduation Rate Two-year Institutions

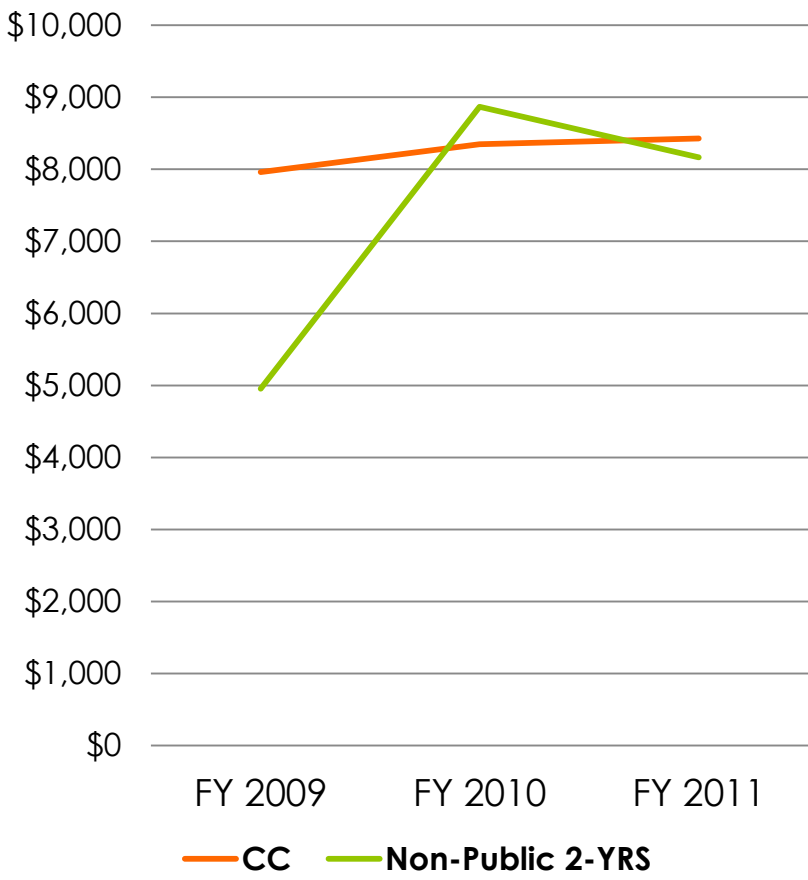


# Excellence: Operating Expenses per FTSE

### Universities

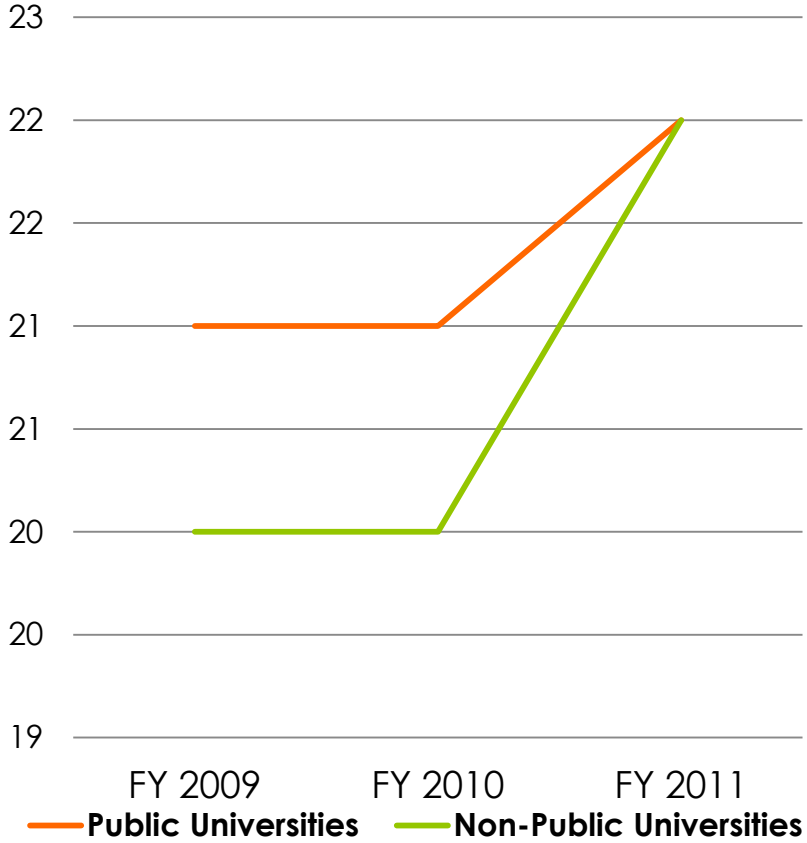


### Two-year Institutions

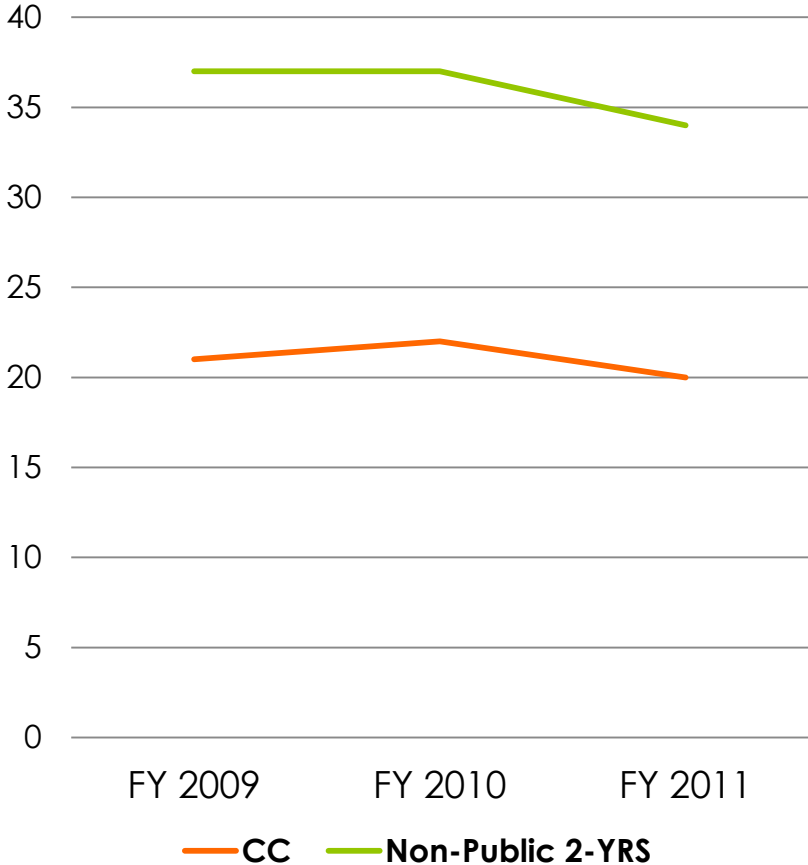


# Excellence: FTSE/FTFE Ratio

### Universities



### Two-year Institutions



# Websites

- Higher Education data
  - <http://www.txhighereddata.org/>
- Accountability System
  - <http://www.txhighereddata.org/Interactive/Accountability/>
- Online Resume
  - <http://www.txhighereddata.org/Interactive/Resumes/>



# Contact Information

- Dr. Gabriela Borcoman
- Texas Higher Education Coordinating Board
  - Phone: 512-427-6134
- Email: [gabriela.borcoman@thecb.state.tx.us](mailto:gabriela.borcoman@thecb.state.tx.us)