



Graduation Incentive Grants: What Funding Amount Results in the Best Outcomes

Jinny Case, M.S.

Overview

- University Environment
- Graduation Initiative
- Late Intervention
 - Eligibility criteria and program description
 - Program metrics over time
 - Methods and Results
- Conclusions and Next Steps



University Profile

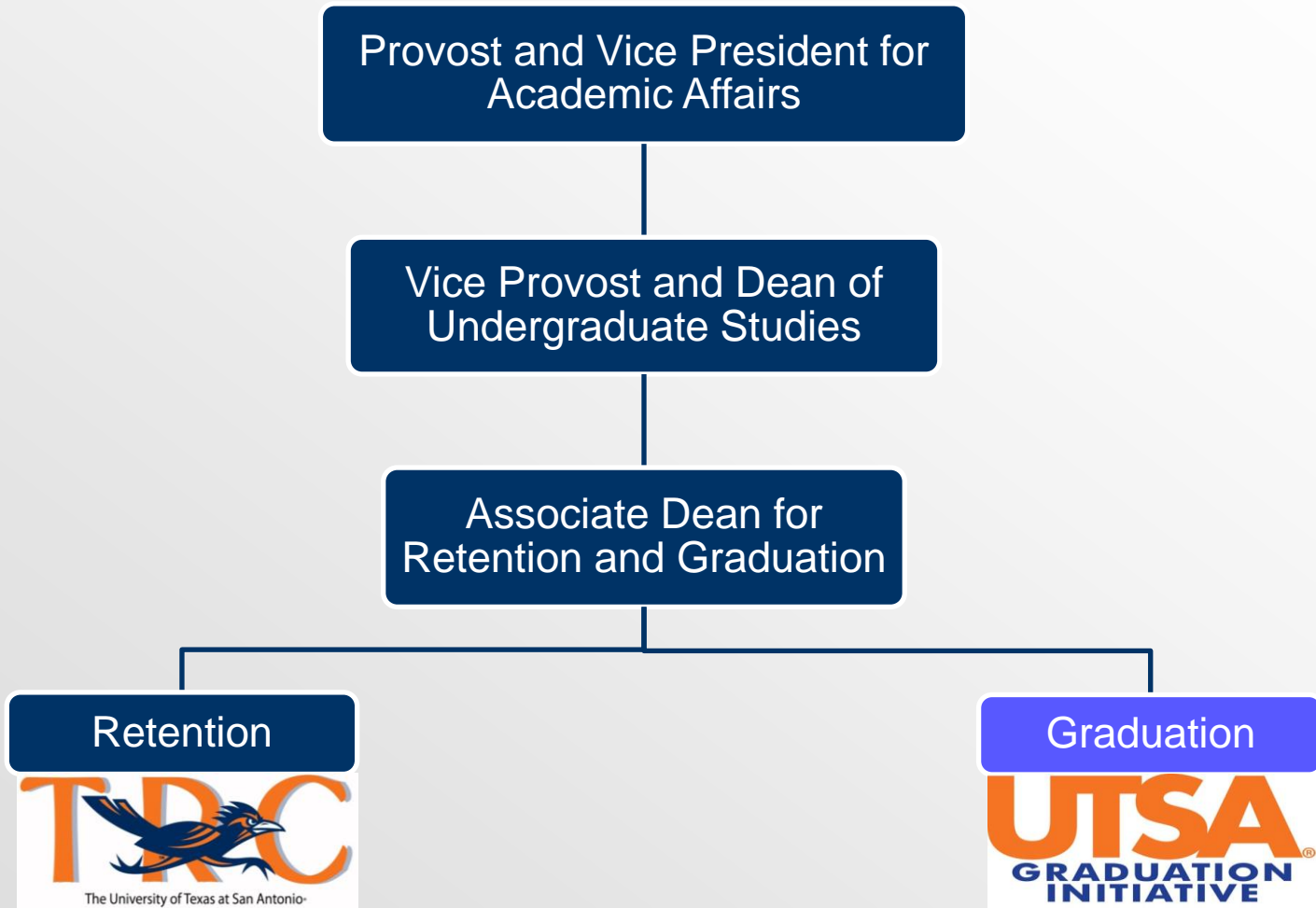
- Established 1969
- 3 campuses, 8 colleges
- Mission of access and excellence
- 30,474 students
- 92% in-state students (44% Bexar county)
 - 11% from South Texas
 - 15% from Gulf Coast
- HSI, majority minority
 - 45% Hispanic
 - 31% White
 - 9% African American
 - 5% Asian/Pac. Islander
 - 6% International
- 52% M, 48% F
- 82% of undergrads attend full-time

Graduation Initiative



The UTSA Graduation Initiative, through research, information sharing, and direct student programs, seeks to increase the university's graduation rate and the number of students earning an undergraduate degree.

Where the GI fits into university structure



Associate Dean for Retention and Graduation



Established 1993

- 35 professional staff
- 200+ student staff
- 10+ programs/services
- Primary focus on direct student programs



Established 2007

- 5 professional staff
- 2 student staff
- 5 programs/services
- 3-part mission includes research, information sharing, and direct student programs

Freshman



Sophomore



Junior

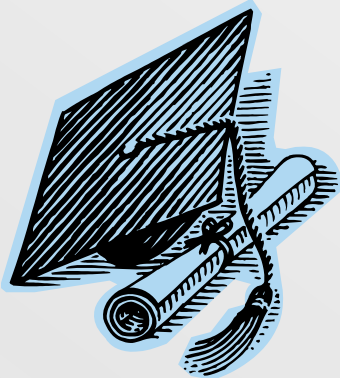


Senior

Direct Student Programs

- Late Intervention
- Finish in Four
- Welcome Back

All of these
programs
combine intensive
case
management with
grant monies



Late Intervention (LI)

- Meant to impact 6-year graduation rate and absolute number of graduates
- Work specifically with native Cohort students from five years earlier
- Provides a grant for each remaining semester *and* intensive follow-up along with advocacy to successfully navigate university policies or other non-academic barriers

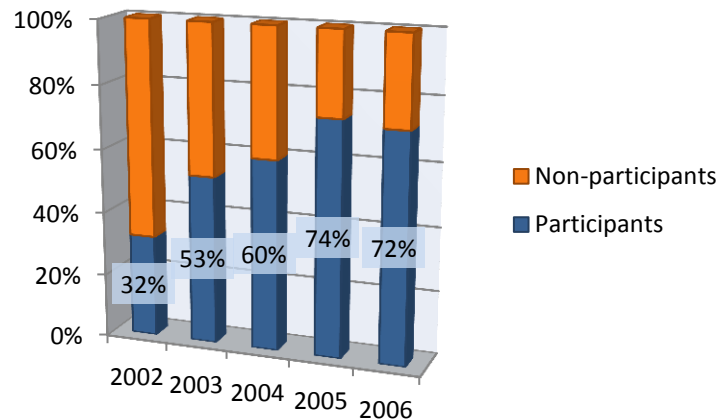
Eligibility Criteria for LI

- Part of the entering FTFT cohort, five years earlier
- 60+ earned hours with five potential semesters remaining
- 2.0+ institutional GPA
- Degree program analysis indicates six year graduation is possible

Program Metrics over Time

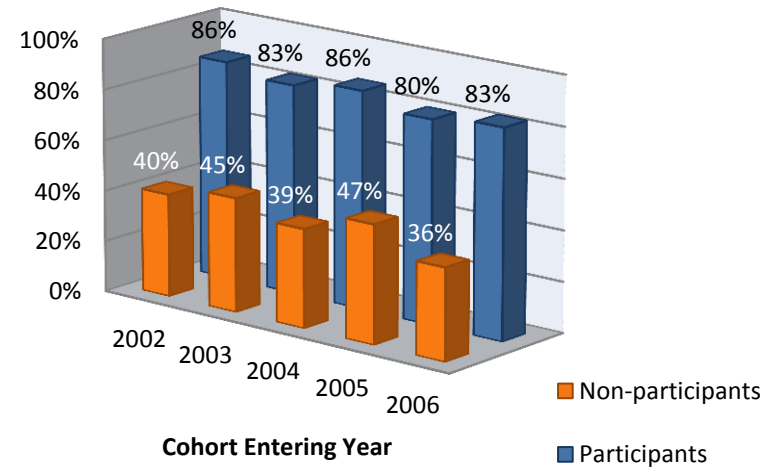
Participation

Percent Participating in LI



Graduation

Percent Graduated within 6 years



History and Changes in LI

Entering Cohort	Max Total Award	Max per Semester	Percent Graduated in 6 yrs
2002	\$2,000	\$2,000	86%
2003	\$4,000	\$1,000	83%
2004	\$4,000	\$2,000	86%
2005	\$3,000	\$1,500	80%
2006	\$3,000	\$1,500	83%
2007	\$3,000	\$1,500	TBD

Question

Does the amount of the grant (per semester)
have an effect on the likelihood of
graduating?



Methods

- Dataset of all eligible students in years 2002 to 2006
- DV = graduated/not graduated
- Received grant/did not receive grant
- Total award in increments of \$100
- Number of semesters remaining
- Added sex, race/ethnicity, College

Results

Selected IVs by Graduation Status

	Percent	Count
	Graduated	
White	68	626
Black or African American	64	143
Hispanic	65	975
Other	62	248
Male	63	1037
Female	68	955
Received grant	83	851
No grant	41	1141

	Percent	Count
	Graduated	
Architecture	65	103
Business	68	428
Education	71	351
Engineering	68	135
Liberal and Fine Arts	63	502
Public Policy	73	88
Sciences	60	373
University College	8	12
One Semester	88	355
Two semesters	82	514
Three semesters	83	229
Four semesters	68	37
Total	65	1992

Results

Logistic Regression Results			
	Model 1	Model 2	Model 3
Constant	1.978	.820	.801
COA	1.251	1.168	1.193
COB	1.409*	1.318	1.294
COE	1.531*	1.026	1.098
COEHD	1.517**	1.293	1.338
COS	.988	.876	.902
COPP	1.775*	1.689	1.659
Male	0.769**	0.793*	.806
Other	.813	.878	.855
Black	.853	.732	.759
Hispanic	.856	0.775*	.786
Received grant		7.592***	5.048***
Total grant			1.901***
Number of semesters			0.523***
*Sig ≤ .05	-2 log likelihood (1)		2544.83
**Sig ≤ .01	-2 log likelihood (2)		2144.4
**Sig ≤ .001	-2 log likelihood (3)		2104.89

Is there an ideal grant amount?

- Can the recipient work less hours?
- Will it pay for a summer course?
- What additional/other services are offered with the grant?

Moving Forward

- Moving focus to four-year graduation
- Retaining good results with struggling seniors, even without grant monies



Jinny Case

Associate Director

The Graduation Initiative

MS 2.03.14

210-458-6787

jinny.case@utsa.edu